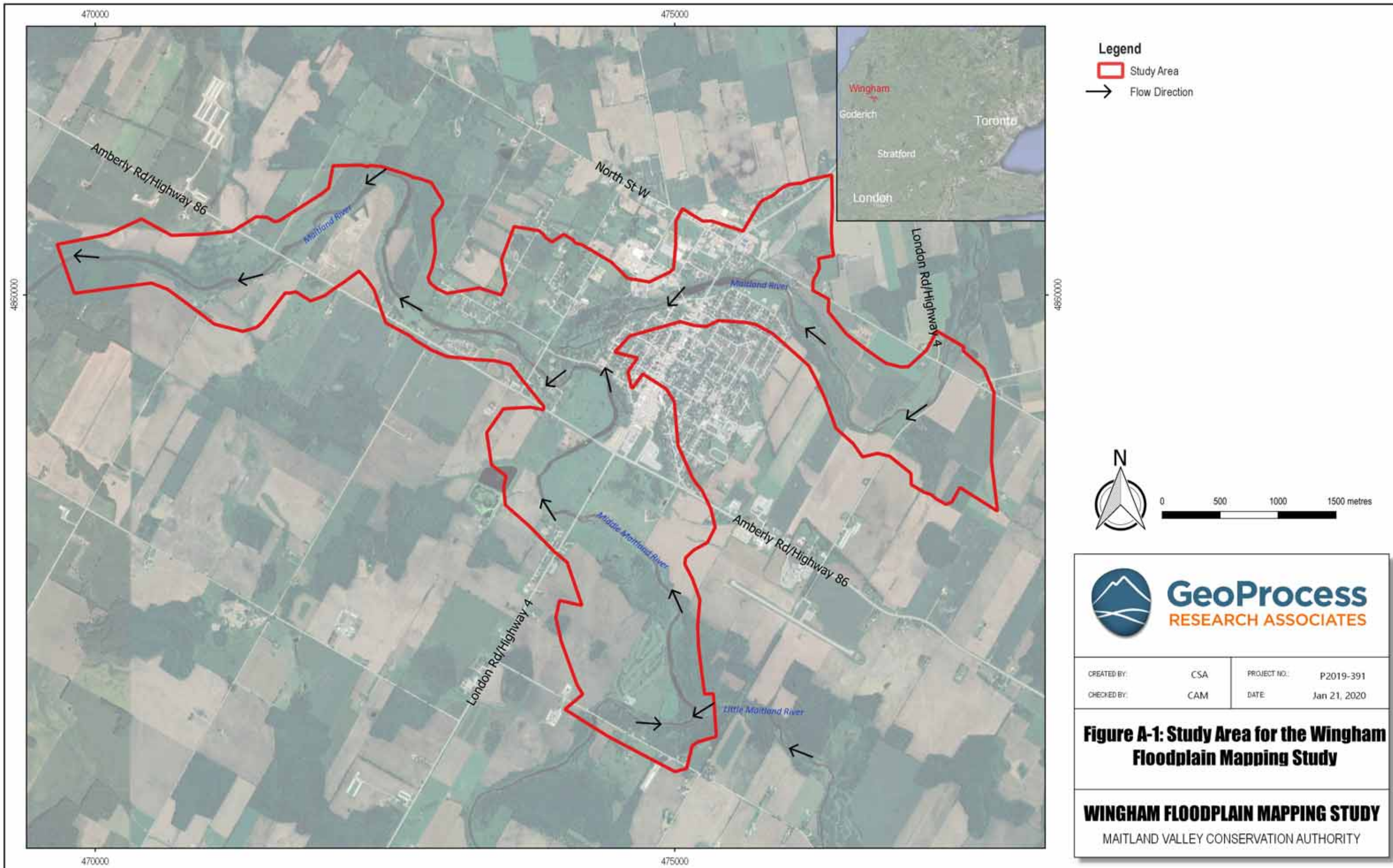
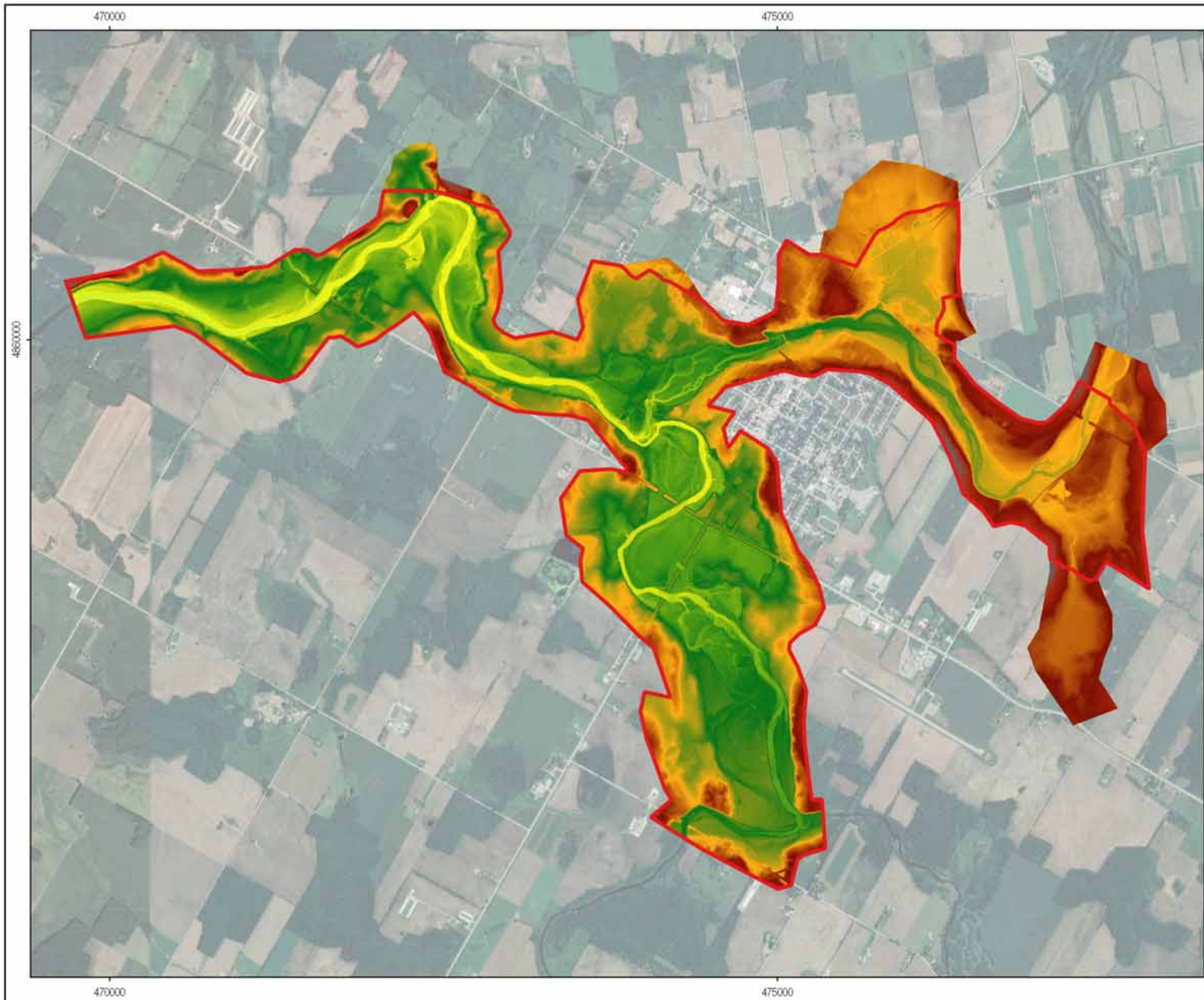




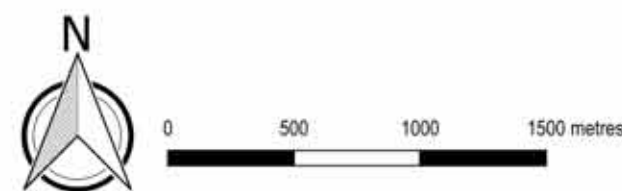
Appendix A

Additional Figures





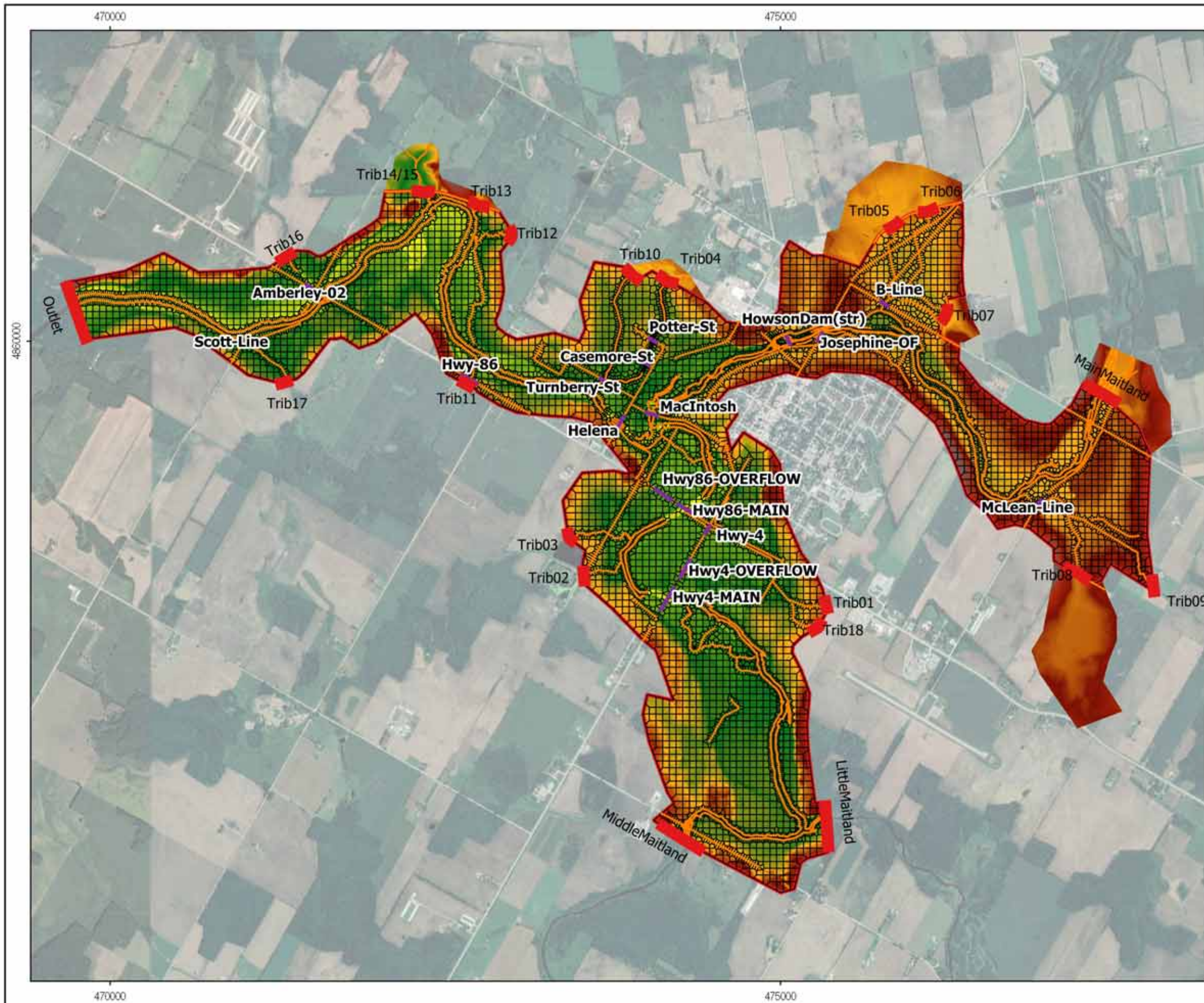
- Legend**
- Study Area
 - Terrain Elevation (masl)
 - 295
 - 300.6
 - 306.6
 - 312.2
 - 317.8
 - 323.4
 - 329.4
 - 335



CREATED BY:	CSA	PROJECT NO.:	P2019-391
CHECKED BY:	CAM	DATE:	Jan 21, 2020

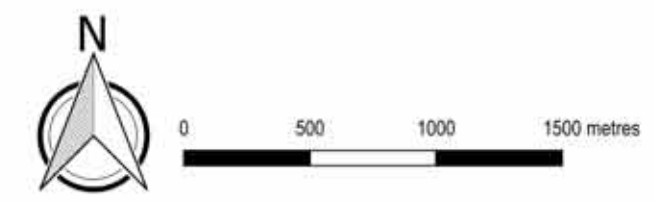
Figure A-2: Terrain Used for the Hydraulic Model

WINGHAM FLOODPLAIN MAPPING STUDY
 MAITLAND VALLEY CONSERVATION AUTHORITY



Legend

- Study Area
- Boundary Conditions
- 2D Mesh
- Breaklines
- Hydraulic Structures
- Terrain Elevation (masl)
- 295
- 300.6
- 306.6
- 312.2
- 317.8
- 323.4
- 329.4
- 335



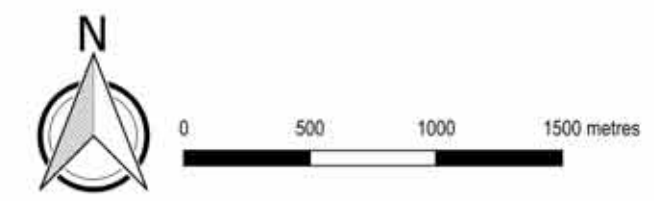
CREATED BY:	CSA	PROJECT NO.:	P2019-391
CHECKED BY:	CAM	DATE:	Jan 21, 2020

Figure A-3: Model Geometry



Legend

- Study Area
- Land Cover**
- 0
- Agricultural and Undifferentiated Rural Lands (n=0.04)
- Swamp (n=0.08)
- Plantations - Treed Cultivated (n=0.1)
- Hedge Rows (n=0.07)
- Mixed Treed (n=0.1)
- Treed - Upland (n=0.1)
- Clear Open Water (n=0.035)
- Community/Infrastructure (n=0.02)
- Marsh (n=0.08)
- Sand/Gravel/Mine Tailings/Extraction (n=0.03)



CREATED BY:	CSA	PROJECT NO.:	P2019-391
CHECKED BY:	CAM	DATE:	Jan 21, 2020

Figure A-4: Land Cover

WINGHAM FLOODPLAIN MAPPING STUDY
 MAITLAND VALLEY CONSERVATION AUTHORITY