

FALLS RESERVE CONSERVATION AREA

80900 FALLS RESERVE LINE
ASHFIELD-COLBORNE-WAWANOSH
HURON COUNTY

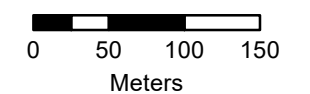
Legend

- | | |
|--------------------|-----------------------------------|
| Parking Areas | Local Road |
| Fishing Permitted | Highway |
| Pavilion | Watercourses |
| Picnic Shelter | MVCA Property - Camping Available |
| Picnic Tables | Municipal Boundaries |
| Swimming Permitted | Property Boundaries |
| Washroom | Urban Areas |

Go to www.mvca.on.ca for info on day-use and camping.

- | | |
|--------------------------|--|
| Camping Permitted | Pets on Leash |
| Hiking Permitted | Snowshoeing / Cross-Country Skiing Permitted |
| No Hunting | |
| No Unauthorized Vehicles | |

1:5,000

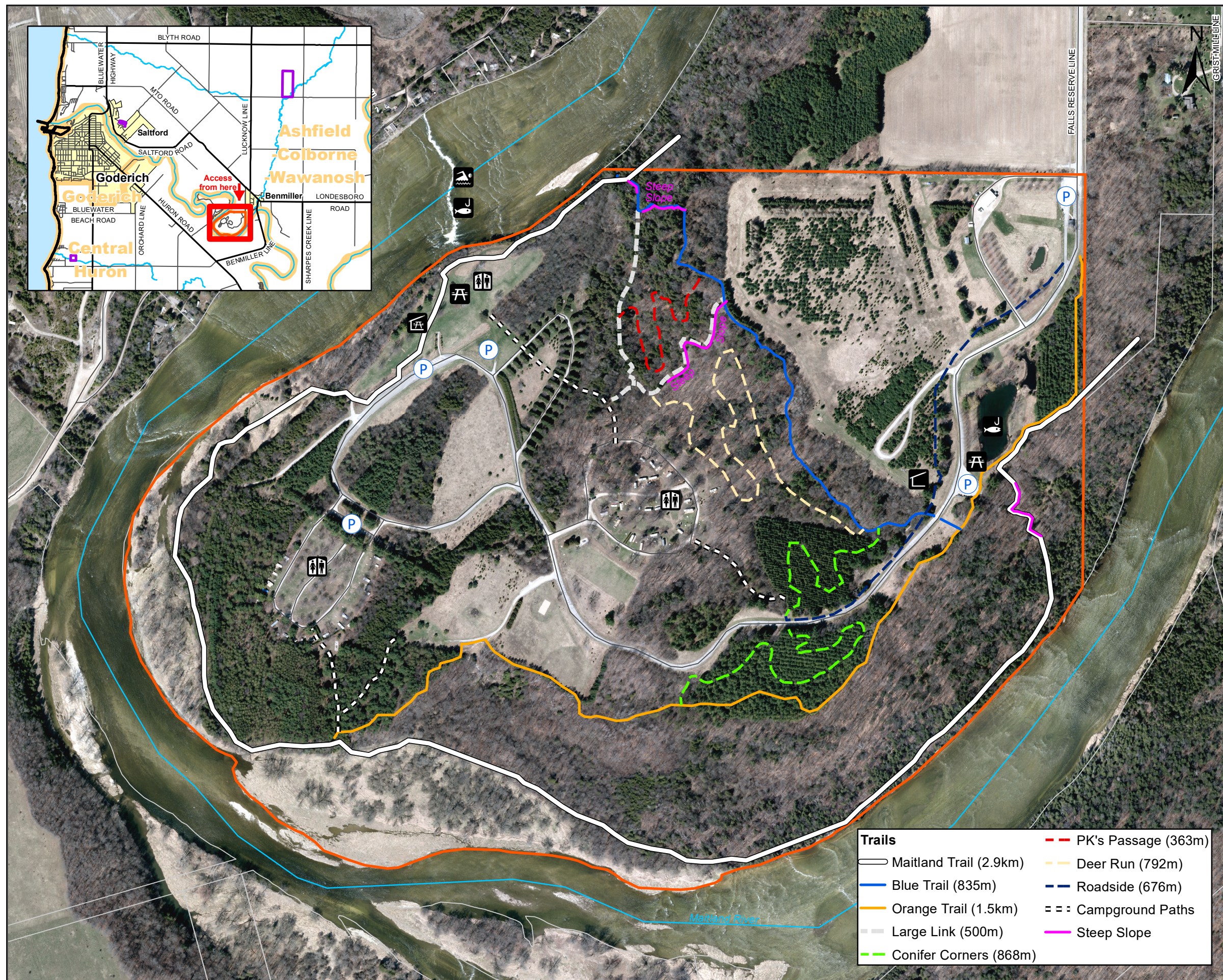


1 cm = 0 kilometers

Map Projection: UTM NAD83 Zone 17

Produced by Maitland Valley Conservation Authority, GIS/Planning Services under Licence with Ontario Ministry of Natural Resources.
Copyright (c) Queen's Printer 2021.

Aerial Photography taken in 2020 by Aeroquest Mapcon Ltd.



- ### Trails
- | | |
|------------------------|---------------------|
| Maitland Trail (2.9km) | PK's Passage (363m) |
| Blue Trail (835m) | Deer Run (792m) |
| Orange Trail (1.5km) | Roadside (676m) |
| Large Link (500m) | Campground Paths |
| Conifer Corners (868m) | Steep Slope |